

Your Response is Very Important

Please respond to the few questions below and tear off this section. Drop it by the Town Hall, or at the outside Utility Drop Box.

After reading this brochure;

Yes No

1. Could you recognize the odor and signs of a gas leak ?
2. Would you know what to do or who to call if you suspected a gas leak ?
3. Do you know the number to call if you are digging for any reason?
4. Do you think this brochure has been generally informative?

Is a contractor doing work at your home? Verify that a call has been made to the One Call Center, 811.

You may also call us with your comments. Thank you for your help.

Preventing Damages

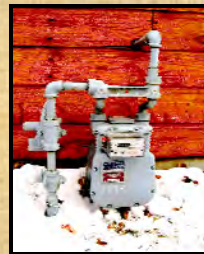
Notification

Anyone who engages in any type of excavation must provide advance notice of at least two business days not counting the day of



the call. Call before you dig !

Pipelines are buried for their protection and when feasible main lines are marked by a pipeline marker. Most mains in Town are not marked. Be aware that markers note the approximate location of the pipeline and may not show the exact location.



We need you to help us keep a watchful eye on your meter set.



This is what can happen after a winter like last year.

TOWN OF RANGELY GAS DEPARTMENT



PUBLIC AWARENESS



PIPELINE DAMAGE PREVENTION

Visit www.rangely.com for important information and energy saving tips.

Este es un mensaje muy importante publico de seguridad. Se usted no puede leer ingles por favor mera un interpreter.

Gracias

OUR MESSAGE TO YOU

Our goal is to provide safe, reliable gas service to our customers and ensure the safety of those living and or working near our gas facilities and pipelines.

*You are among hundreds of people who live near our pipeline facilities. We have developed this brochure to help you to identify our facilities and to provide **IMPORTANT** information to you.*

Working together we can prevent a possible emergency. Know how to recognize and respond to a possible natural gas emergency.

Natural gas is one of the safest and most dependable energy sources available. The Gas Department operates and maintains our Natural Gas System to meet or exceed regulatory standards. We regularly patrol and leak survey our system facilities in an effort to eliminate potential safety hazards.

OUR MESSAGE TO YOU

As part of our ongoing Public Awareness Program, information distribution and educational presentations are performed with school children, emergency officials, other departments of the Town, and the general public.



KNOW WHERE YOUR GAS METER IS



EMERGENCY SHUT OFF

VALVE →

GAS LEAKS ...RECOGNIZE

Some signs of a gas leak include:

- A gaseous or hydrocarbon odor.
- A blowing or hissing sound.
- Dust blowing from a hole in the ground.
- Continuous bubbling in wet or flooded areas.
- Unusual noise at an appliance.
- Flames if a leak has ignited.
- A spot of dead or discolored vegetation in an otherwise green area.
- Odor of gas where excavation is in progress or has recently been completed.
- Immediately report any suspicious odor.

Carbon Monoxide Can Be Deadly

- You can't see or smell carbon monoxide, but at high levels it can kill a person in minutes.
- Carbon monoxide (CO) is produced whenever any fuel such as gas, oil, kerosene, wood, or charcoal is burned.
- If appliances that burn fuel are maintained and used properly, the amount of CO produced is usually not hazardous.
- If appliances are not working properly or are used incorrectly, or vents/flue pipes are blocked, dangerous levels of CO can result.
- Do not use an oven or range as a source of heat.
- Install a Carbon Monoxide Detector.

GAS LEAKS...RE-ACT

Inside Leak - Call the Town of Rangely immediately. Evacuate the premises if the odor is strong or audible and call from a neighbors home. Do not turn lights on or off.

Outside Leak - Call the Town of Rangely, remain clear of the immediate area.

In the event that any person "hits", "punctures", etc. a gas line **STOP ALL EQUIPMENT AND EVACUATE THE AREA IMMEDIATELY.** Contact the Town of Rangely at once.

Report even minor damage such as dents, scrapes or chips. Do not cover the line.

Notify Town of Rangely

Town of Rangely

Monday - Friday 8:00 a.m. to 5:00 p.m.

(970)675-8476 or 675-8477

Police Department

Non-Emergency (970) 675-8466

Emergency 9-1-1

Someone is on call 24 hours a day, 7 days a week, and can be reached through the Police Department in an emergency or after normal working hours.

For Additional Information

Town Hall: 209 E Main Street

Gas Shop: 514 Prospect Avenue

Rangely, CO 81648

www.rangely.com

GENERAL INFORMATION

Natural gas is distributed throughout the Rangely area and mains are found in alleys, easements, and roadways. The majority of these lines are plastic and buried 24-36 inches deep. Service lines are connected at the main and distribute gas to the residences. The majority of these lines are plastic and buried 12-18 inches deep.



Even if you do not have gas to your home, you may still have a gas main in an easement through your property.

Looks can be deceiving, don't assume anything. Call before you start any outside project; fence building, new garage, planting yard gardens, bushes or trees, etc..

Do not build a structure over a gas line.

